

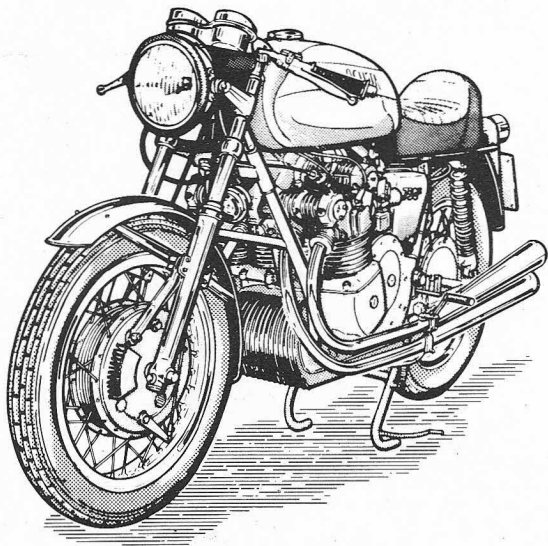


750
Sport

Libretto di uso e manutenzione
Riders manual
Manuel d'instructions

750 Sport

C.C. 4 CYLINDERS



**USE AND
MAINTENANCE**

N.L. 126-4

MECCANICA VERGHERA - S.p.A.
VIALE ADRIATICO, 50 - 21010 Verghera - (VARESE) ITALY
Tel. 0331-228200 - Telex 31057 AGUSTA

Quick reference:

- maximum breaking-in speeds see page 3
- fuel and lubricants to be used see page 6
- tire pressure see page 5
- changing engine oil see page 26
- spark plug gap setting see page 27
- removal of wheels see page 42
- location and type of electric fuses see page 48
- headlight adjustment see page 50

INDEX

	Page
— Breaking-in	2
— General data	4
SECTION I	
CONTROLS AND INSTRUMENTS	
Motorcycle - main controls and instruments	9
SECTION II	
USE OF MOTORCYCLE	
Lifting motorcycle on its center stand	17
Engine starting	17
Motorcycle starting and riding	18
When riding	21
Stopping the motorcycle	22
SECTION III	
MAINTENANCE — ADJUSTMENTS	
General information	23
Periodic inspection and lubrication	23
Engine — Gearbox	26
Spark plugs	27
Distributor	31
Fuel cocks	33
Carburetors	33
Starter-generator belts	33
Valve clearance adjustment	34
Adjustment of control cables	35
Front fork	40
Steering bearing play adjustment	41
Rear fork bearing play adjustment	41
Removal of wheels	42
Rear bevel-gear-drive box	45
Electrical system and components	47
Motorcycle storage	52
SECTION IV	
TROUBLE SHOOTING	53
TECHNICAL DATA	61

BREAKING-IN

GENERAL INFORMATION

Although the motorcycle is delivered without any limiting device to the normal operation of the carburetors, it is advisable to avoid constantly demanding the maximum power and speed from the engine. For maximum life of all components it is recommended that instructions listed in Table I be carefully followed.

RECOMMENDATIONS FOR THE FIRST OPERATING PERIOD

- A breaking-in period of at least 1800 miles (3000 km) is recommended.
- The RPM limit may be gradually increased to reach the maximum allowable limit after the first 1800 miles (3000 km).
- Avoid holding the maximum speeds outlined in Table I for a long period of time.

Note

Avoid riding with throttle full open,

especially when climbing slopes. It is advisable to shift into a lower gear.

- After starting slowly warm up the engine and avoid running it at too high a RPM rate.
- After the first 300 miles (500 km) change the oil while the engine is hot and clean the mesh filter. After the first 600 miles (1000 km) again change the oil and replace the filter element. Make sure that all hardware, connections, etc. are perfectly tight.

WARNING

Always make sure that all hardware, connections, etc. are perfectly tight, so that your motorcycle is maintained in the best condition. Non-compliance with this recommendation will be prejudicial to a safe riding.

- After the first 1800 miles (3000 km) again change the oil while the engine is hot.

BREAKING-IN PERIOD – MAX. ALLOWABLE SPEEDS						
Mileage	km	Max. allowable speed and R.P.M. M.P.H. (km/h)				
		1st Gear	2nd Gear	3rd Gear	4th Gear	5th Gear
0—600	0—1000	32 (51) 5000 RPM	45 (72) 5000 RPM	64 (103) 5500 RPM	76 (123) 5700 RPM	90 (145) 6000 RPM
600—1800	1000—3000	38 (61) 6000 RPM	53 (86) 6000 RPM	70 (112) 6000 RPM	90 (145) 6500 RPM	106 (170) 7000 RPM

Table I. Maximum allowable speeds (breaking-in period)

Note

After the breaking-in period, the oil must be changed every 3600 miles (6000 km) (see Section III, LUBRICATION DIAGRAM).

GENERAL DATA

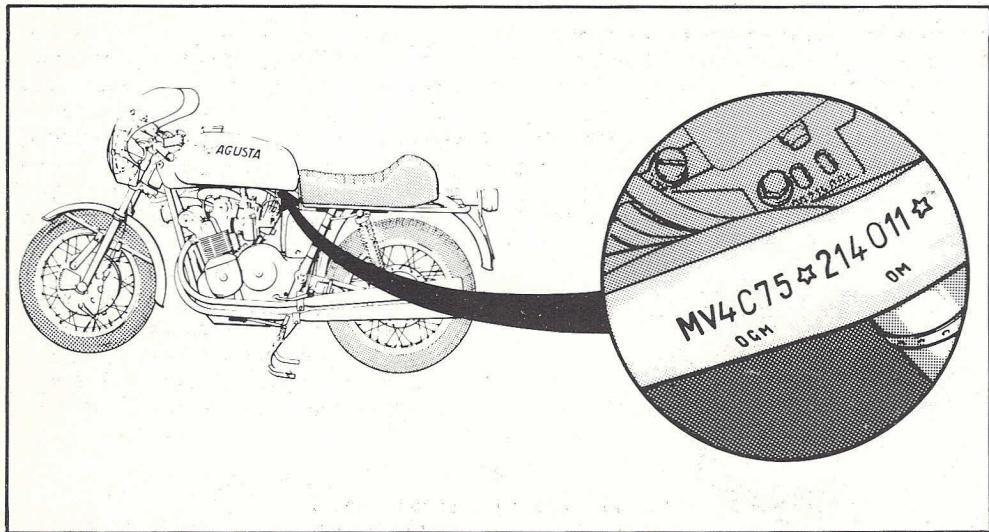


Figure 1-1. Motorcycle identification serial number

MOTORCYCLE IDENTIFICATION

Every single motorcycle is identified by a serial number stamped on its frame in the position shown in figure 1-1. This number is for motorcycle identification as required by law and is also entered in the "Certificate of Ownership".

Note

Always refer to this identification serial number on any spare-parts order.



SERVICING

Refer to Tables II and III for any information relative to servicing points, products and quantities.

TIRE PRESSURE

Front tire	28.4 to 31.2 psi (2 to 2.2 kg/cm ²)
Rear tire	34 to 38.3 psi (2.4 to 2.7 kg/cm ²)

CAUTION

The above mentioned tire pressures are indicative and are only valid for the "METZELER" tires originally installed. In case of replacement with other tires strictly follow the manufacturer's directions.

Note

The spring load of the rear shock absorbers can be adjusted for solo or dual riding (see figure 1-2, sheet 3 of 3).

Part to be refuelled or lubricated	Quantity		Product (5)	Note
	U.S. gals. (lt)	lbs. (kg)		
Fuel tank (1)	6.3 (24)		Gasoline (98-100 Oct.)	—
Engine gear box (2)		8.8 (4)	AGIP SINT 2000 oil	See page 26
Rear wheel bevel-gear		0.8 (0.4)	AGIP F.1 ROTRA SAE 90 oil	See page 45
Telescopic fork (3)		0.39 (0.18)	— AGIP F.1 ROTRA AFT oil — AGIP F.1 OSO 55 oil (summer)	See page 40
Wheel hubs and movable frame parts	As required		AGIP F.1 GREASE 33FD	—
Cable in sheaths	As required		AGIP F.1 GREASE 15	—
Disc brakes hydraulic fluid reservoir (4) (if installed)	As required (3/4 of capacity)		FIAT Special Fluid Blue Label	See page 37

- (1) Gasoline quantity outlined in this table is the total quantity necessary for filling the tank (5.3 U.S. gal. reserve supply) (20 lt + 4 reserve supply).
- (2) The oil listed in this Table is of the Multigrade type and may be used year round.
- (3) Oil quantity listed in this Table is for one leg only of the telescopic fork.
- (4) The hydraulic brake fluid, shown in this Table, is the one originally supplied. As many hydraulic brake fluids may be mixed, any other good hydraulic brake fluid may be used to bring the fluid in the reservoir to its proper level.
- (5) See Table III for a list of alternate suppliers and the specific name of their equivalent products.

Table II. Servicing, capacities, products

